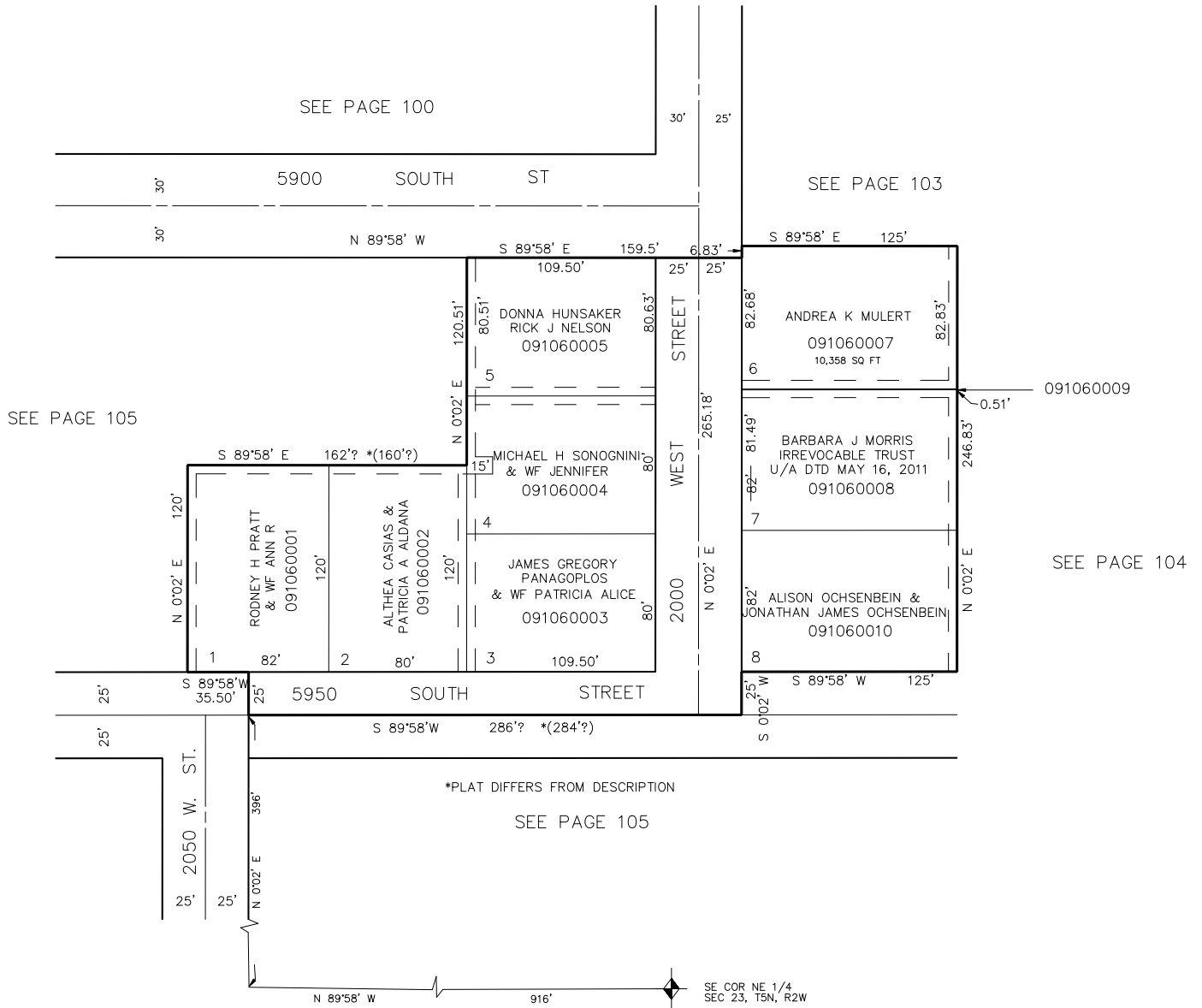


PART OF N.E. 1/4 OF SEC. 23, T.5N., R.2W., S.L.B. & M.  
**PURSER SUBDIVISION**  
 IN ROY CITY  
 SCALE 1" = 50'

TAXING UNIT: 41



5' UTILITY & DRAINAGE EASEMENTS EACH SIDE OF PROPERTY LINES AS INDICATED BY DASHED LINES EXCEPT AS OTHERWISE SHOWN.

FOR COMPLETE ENG DATA SEE ORIGINAL DEDICATION PLAT IN BOOK 13, PAGE 19 OF RECORDS.